



Live your life Kingsize



Natural
Majesty

...be a royal

Welcome to the World of
Gen Next Living



Natural
Majesty

A Splendid
Commercial cum Residential Project



CONCEIVED WITH BRILLIANCE.
CRAFTED TO NURTURE COMMUNITIES.

The Natural Group, one of the most illustrious names in Real Estate in the East and is noted for its brilliant space efficient sustainable Community Homes and Developments.

The latest project Natural Majesty exhibits a modernism flavor. The project is a well designed Commercial cum Residential Multifunctional Tower with embellishments of all amenities. The standalone G+7 tower has been elegantly crafted to inspire and to match the distinguished lifestyle.

Come .. *Live your life Kingsize*



All Stocker





A NEIGHBOURHOOD THAT LETS YOU
SPURGE AND INDULGE TO YOUR
HEART'S CONTENT.

The resurgent Kolkata's business hub is rapidly growing. Natural Majesty is less than a minute away from Birati Railway Station & the first icon Natural City Complex. The location also brings you in close proximity to every important part of the city. Reach effortlessly places like...Banks, Mall, Market, Schools, Railway & Metro Station.

TOWER FEATURES

- Ultramodern Architecture with 43% open to sky
- Well designed and Grand Entrance Lobby
- CCTV Surveillance with multi-level Car Park
- Spacious Lobby on all the floors
- High Speed Elevators
- Commercial Frontage on 30 ft. Wide Road
- Comprehensive Firefighting and Fire Alarm System
- All Round Greenery
- Kids Play Area
- Generator Back up 24x7



Experience Infinity in Everything

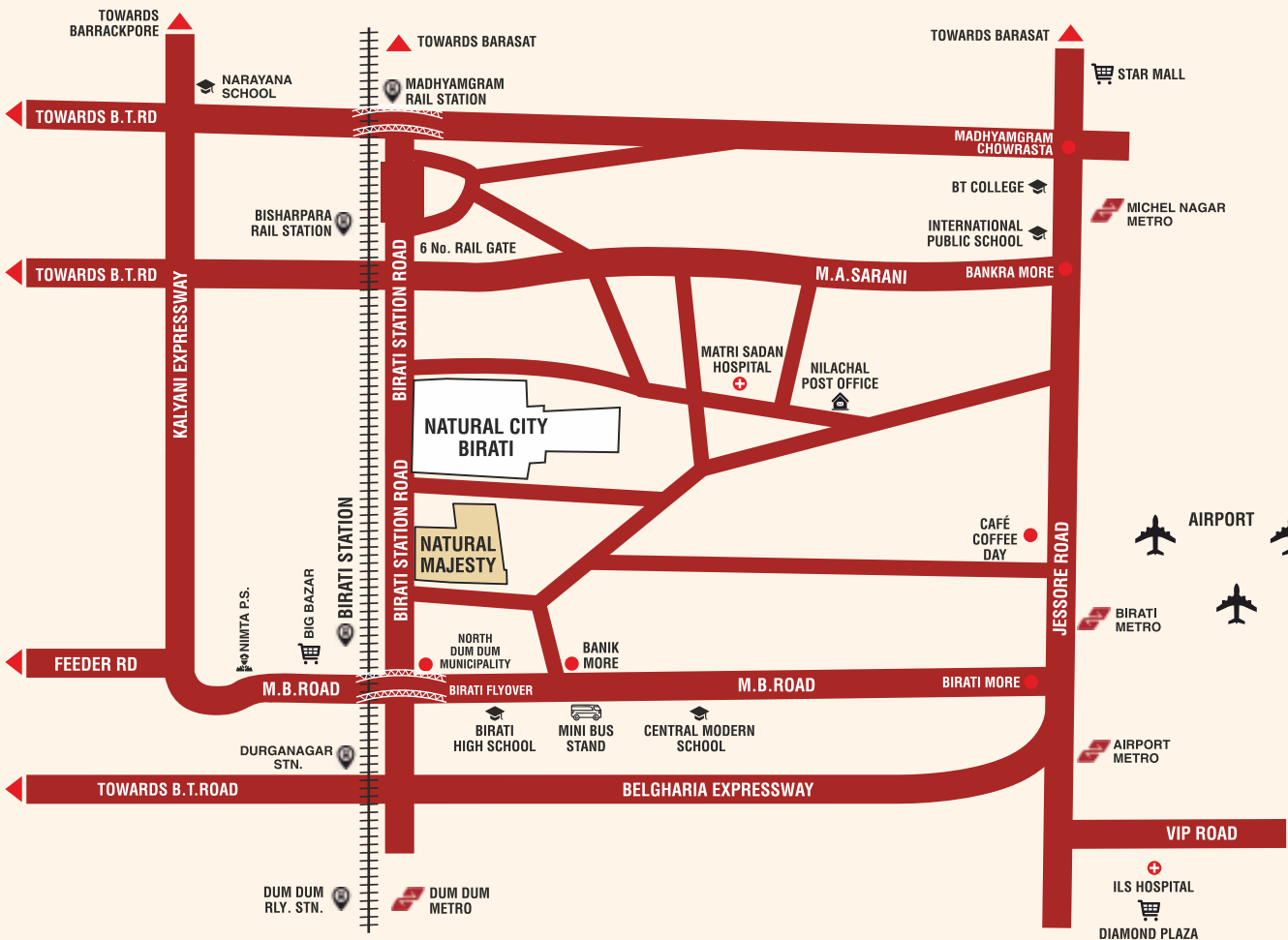
A Bespoke Royal Lifestyle!



SPLENDID
LUSHNESS

Witness the grandeur
of Mother Nature.
Engage in silent
conversations with
yourself. Relish the
beautiful green vistas.
Embrace the serenity
that surrounds you.
Natural Majesty
is beautiful.

LOCATION MAP



| Commute | |
|---------------------|----------|
| Airport | : 3 Km |
| Jessore Road | : 1.5 Km |
| Kalyani Express Way | : 1.8 Km |

| Railway Station | |
|-----------------|-------------|
| Birati | : 850 Mtrs. |
| Bisharpara | : 1.01 Km |

| Shopping Mall | |
|---------------|----------|
| Big Bazar | : 1.3 Km |
| Diamond Plaza | : 8.0 Km |

| Healthcare | |
|-----------------|----------|
| ILS Hospital | : 7.5 Km |
| Zenith Hospital | : 7.0 Km |

| Metro Station | |
|---------------|----------|
| Dum Dum | : 9.0 Km |
| Noapara | : 7.0 Km |

| School / Education | |
|--------------------|----------|
| B.T.College | : 3.2 Km |
| Birati College | : 1.2 Km |

Upcoming Metro Station

Michel Nagar : 2.3 Km | Birati : 2 Km | Airport : 4 Km



Modern Amenities

Community Hall (A.C.)

.....

Outdoor Gymnasium

.....

Kids Play Area

.....

Rooftop Sitting & Greenery Area



MAJESTIC INSIDE
MAGNIFICENT OUTSIDE

MASTER FLOOR PLAN



A MAGNIFICENT EXCLUSIVE TOWER



Rediscover the concept of abundance at Natural Majesty, Birati. Savor the luxury of exclusive space. Share it with no one but your family. Rekindle the beautiful feeling of exclusive community living. Truly... it is a royal life surrounded by greenery & pollution free environment.

Majesty

GROUND FLOOR PLAN



| TYPE | Saleable Area (Sqft) |
|------------|----------------------|
| SHOWROOM-1 | 2783 |



Majesty

FIRST FLOOR PLAN



| Type | Flat Type | Carpet Area (Sqft.) | Balcony Area (Sqft.) | Built Up Area (Sqft.) | Saleable Area (Sqft.) |
|------|-----------|---------------------|----------------------|-----------------------|-----------------------|
| D | 3 BHK | 802.46 | 41.44 | 930.01 | 1237 |
| E | 3 BHK | 802.46 | 41.44 | 924.09 | 1229 |
| F | 2 BHK | 624.20 | 28.74 | 734.21 | 977 |



Majesty

SECOND FLOOR PLAN



| Type | Flat Type | Carpet Area (Sqft.) | Balcony Area (Sqft.) | Built Up Area (Sqft.) | Saleable Area (Sqft.) |
|------|-----------|---------------------|----------------------|-----------------------|-----------------------|
| C | 2 BHK | 625.07 | 30.03 | 733.35 | 975 |
| D | 3 BHK | 802.46 | 41.44 | 926.89 | 1233 |
| E | 3 BHK | 802.46 | 41.44 | 924.09 | 1229 |
| F | 2 BHK | 624.20 | 28.74 | 734.21 | 977 |

| TYPE | Saleable Area (Sqft) |
|------------|----------------------|
| SHOWROOM-2 | 2619 |



TYPICAL FLOOR PLAN

3rd to 7th Floor



| Type | Flat Type | Carpet Area (Sqft.) | Balcony Area (Sqft.) | Built Up Area (Sqft.) | Saleable Area (Sqft.) |
|------|-----------|---------------------|----------------------|-----------------------|-----------------------|
| A | 3 BHK | 802.46 | 39.61 | 921.83 | 1226.00 |
| B | 3 BHK | 802.46 | 39.61 | 921.83 | 1226.00 |
| C | 2 BHK | 625.07 | 30.03 | 733.35 | 975.00 |
| D | 3 BHK | 802.46 | 41.44 | 926.89 | 1233.00 |
| E | 3 BHK | 802.46 | 41.44 | 924.09 | 1229.00 |
| F | 2 BHK | 624.20 | 28.74 | 734.21 | 977.00 |



Specifications

| | |
|-----------------|---|
| Structure | : RCC framed Structure, Standard Brickwork & Plaster |
| External Finish | : Latest & Durable Outer finish |
| Staircase | : Spacious Staircase will be of Tiles & Lobby will be Designer Anti Skid Vitrified Tiles |
| Lifts | : 2 lifts |
| Balcony | : Decorative with MS Railings upto 3 ft. Height and one Power Point and Water Tap for Washing Machine. |
| Flooring | : A) Vitrified tiles in Living room, Dining room, Bedrooms, Balcony with 4" Skirting. B) Anti-Skid Tiles in Kitchen & Toilets |
| Kitchen | : Granite Slab counter with Stainless Steel Sink. Ceramic Tiles up to 2 ft height above platform |
| Toilets | : European Style Western Type Commode (White Colour in all toilets) White wash Basin of reputed make in all toilets, Adequate Water supply through 3 in 1 Mixer with OH Shower & Health Faucet Geyser point in each toilet with elegant CP Fittings of Jaquar or equivalent Brand, 7ft. Tiles (upto Door Height). |



| | |
|-----------------|--|
| Doors | : Good quality Flush Doors. |
| Windows | : Powder Coated Sliding Aluminum Windows |
| Electricals | : Fire Resistant Concealed ISI make copper wiring with branded Modular Switches, PVC Conduct Pipe & Sufficient Lighting Fans and Power Points in all Rooms, Living / Dinning Balcony, Kitchen & Toilets, AC, TV points in Living Room and Master Bed Rooms, Intercom in Living Room, Adequate Power Points and Exhaust Fan Points in Kitchen & Toilets with Glass Panel. |
| Water Supply | : Suitable Electric Pump will be provided for 24 Hrs. Filtered Steady Water Supply. |
| CCTV | : In Common Passage, Main Gate & Ground Floor lobby. |
| Interior Finish | : Smooth finish Gypsum Plaster or Putty on walls and Painting in Lobby and Common Areas only. |

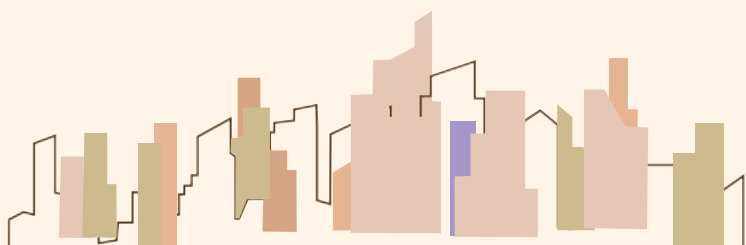


ABOUT US

THE LEGACY OF EXCELLENCE.

FROM INDUSTRY TO COMMUNITY
THE FINE ART OF GIVING BACK TO SOCIETY

Transforming a place into a home and homes into communities is the mission of Natural Group. Creating Better Communities is its reason of existence and happiness of these communities is its motivation. The Group shoulders this responsibility of raising a complete world that brings fulfillment to life. Be it through the flagship business of real estate or its foray into education, healthcare, hospitality, retail and mixed use; the Group continues to create a better experience in every aspect of life – a commitment Natural Group pledges to live up to at every threshold and crossroad of its journey to the summit of excellence.



Past Projects



Natural Heights
Kolkata

Natural City,
Shyamnagar Rd.
Kolkata



Natural Greens
Kolkata

Natural
Park View
Kolkata



Natural Enclave
Kolkata

Natural View
Kolkata



Natural
Sarpapriya
Kolkata

Natural Heights
(Ph-II)



Haldiram
Enclave
Kolkata

Natural Heights
Durgapur



Natural City
Bardhaman

Utopia
(Madurdaha Nr.
Ruby Hospital)



Natural
Curzon Square

Natural City
Birati





Natural
Majesty

Site

376(799), Madhya Nilachal, Mouza - Bisharpara
Birati, Dist - North 24 Pgs, Kolkata - 700134
WBRERA/P/NOR/2025/002557

A PROJECT BY



Natural Infranirman Pvt. Ltd.

📍 9A LORD SINHA ROAD, 1st FLOOR, Kolkata - 700071
🌐 www.naturalgroup.co.in 📧 admin@naturalgroupkolkata.co.in

☎️ **82404 18102**

MARKETED BY



Somani Realtors Pvt. Ltd

📍 40, Ashutosh Mukherjee Rd, Kolkata - 700020
🌐 www.somanirealtors.com 📧 sales@somanirealtors.com

☎️ **98300 48519, 98300 59428**

WBRERA/RA/KOL/2023/000001
Web : <https://rera.wb.gov.in>

Architect

Raj Agarwal & Associates

8B, Royd Street, Kolkata - 700 016