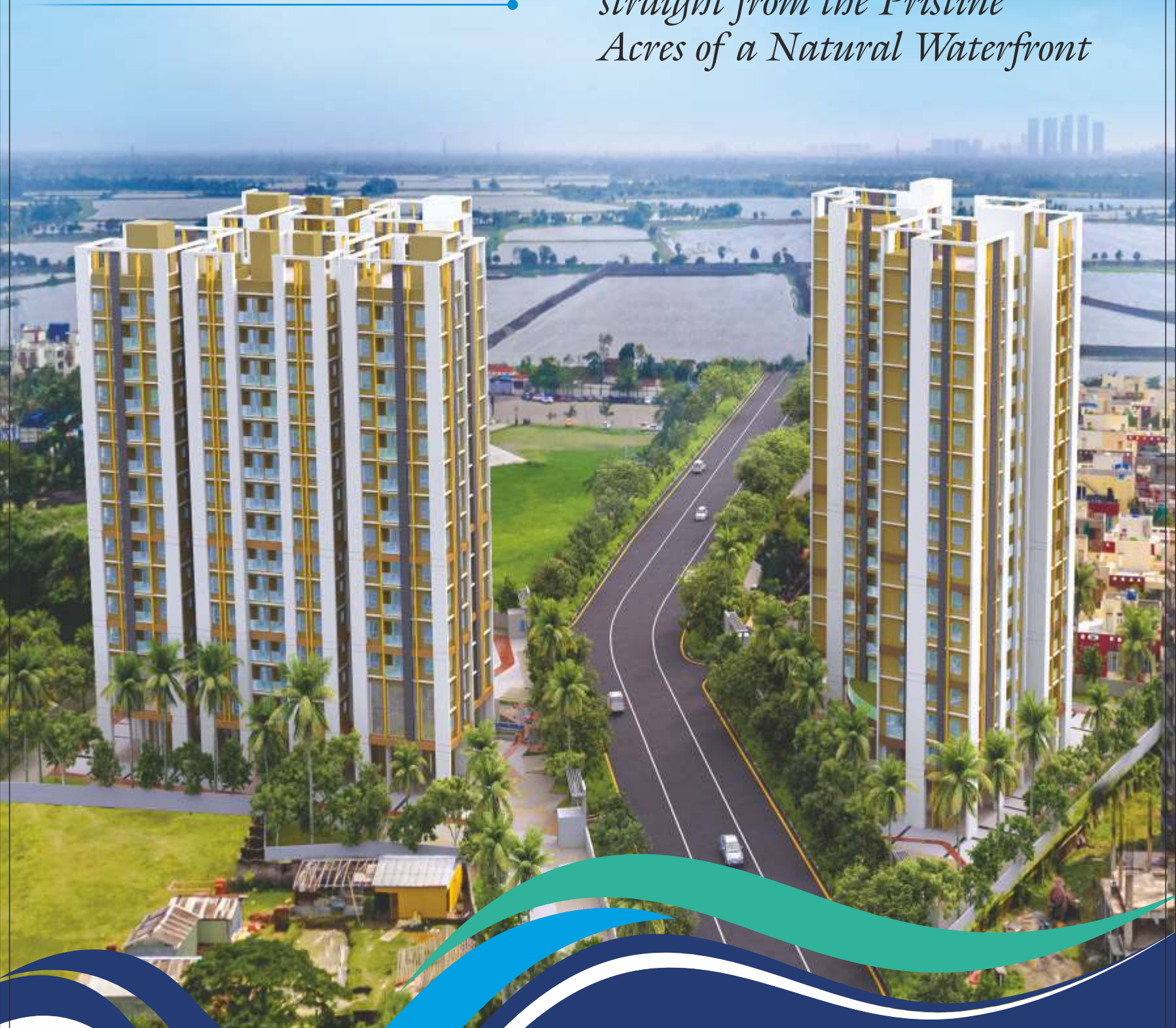


NATURAL
aqua
Waves
East

*Breathe 100% Fresh Air
straight from the Pristine
Acres of a Natural Waterfront*



A Project of


NATURAL GROUP®
THE REAL REALTORS



Inspired
by the World's
Greatest Architect
Nature

OUR ARCHITECTURAL
PHILOSOPHY

We use sustainable materials that not only blend in with the surroundings but are also relevant to the environment in which our homes are built. All elements have been thoughtfully put together to create sustainable and beautiful structures, that are in harmony with all the elements of nature. It will not only create a charming aesthetic effect but will also ensure that you do not need to maintain your house's temperature artificially.

A Cocoon of Calmness Spread Across Tranquil *Greenery*



This is a landmark project having 2 & 3 bedroom condominiums, which give you the best of both worlds; a location with perfect connectivity and a resort-like lifestyle-- at a price that's simply superb!

Nestled in Kochpukur close to Rajarhat 6 lanes and the Biswa Bangla Gate, amid acres of dotted greenery, this project blends seamlessly into the natural topography with it's futuristic architecture and innovative construction design. Get ready for a resort-like ambience combined with the best of natural embellishments.

Call it a curative nature retreat, a country home, or a Villament style apartment project and you are up for surprises. Embrace freedom. Say hello to good life.

NATURAL
aqua
Waves
East
Take it easy

It is indeed thrilling
Your home with a
Resort-like
Feeling

A Project that brings to you
true blue recreation to nurture
your Mind, Body And Soul.





NATURE'S BEAUTIFUL BOUNTY

A project that offers you natural green recreation to delight, to enlighten and to inspire. Simply put, it's nature's beautiful bounty at your service.

GREEN IS THE NEW LUXURY



REJUVENATE YOUR BODY, MIND & SOUL

A ZEN ZONE FOR SENIOR CITIZENS

This residential project is like a curative zone for senior citizens and retired professionals. If you are looking for a nature home with all modern facilities and amenities for your parents or for your seniors in the family, look no further.



Unbox the Best of Urban
Luxury

NATURAL
aqua
Waves
East





Life here is calm, peaceful & serene.
 Take a walk. Read a Book.
 Watch the Birds and the Bees.
 Or simply lounge around.

This is a great nature home project.
 You may call it a country retreat.
 A great investment with rising returns.
 And a great asset for your generation next.



GYM



COMMUNITY HALL



SUNRISE DECK



INDOOR GAMES



YOGA CORNER



KIDS PLAY AREA



GUPSHUP CORNER



SENIOR CITIZENS CORNER



DECORATED ENTRANCE
WITH SECURITY KIOSK



CROSS VENTILATED
APARTMENTS



MEDITATION DECK



CHILDRENS CORNER



PARTY ZONE



KIDDY PUDDLE



SWIMMING POOL



CCTV SECURITY



Calm your senses invigorate your soul and
 live at ease. Take a quiet meditative walk
 at sundown. Let nature
 touch your senses.

Go for blissful escapes everyday. This
 nature nest is full of surprises. This is
 indeed your paradise. Live free. Live in the
 lap of nature.



Location Map



TATA MEMORIAL 5 MINS 📍 BISWA BANGLA GATE 5 MINS 📍 AXIS MALL 5 MINS
 NEWTOWN SCHOOL 5 MINS 📍 ECO SPACE 7 MINS 📍 DPS NEWTOWN 7 MINS
 ECO PARK 8 MINS 📍 SECTOR V 10 MINS 📍 CHINGRIGHATA 18 MINS
 CITY CENTRE II 15 MINS 📍 AIRPORT 24 MINS

It is parallel to the Major arterial Newtown Six Lanes Expressway, and close to Sector V the IT hub, New Town, and of course, Salt Lake. A select few locations in New Town have evolved into a finely-tailored residential area geared towards the upper crust. Areas surrounding Kochpukur are fast developing with rising returns on investment. This is a good investment opportunity for new home seekers, second home investors and people looking for a country home with all modern facilities in a gated community for their elderly parents.

EAST

WEST



SECTOR V

BISWA BANGLA GATE

NEW TOWN

NATURAL
aqua
Waves

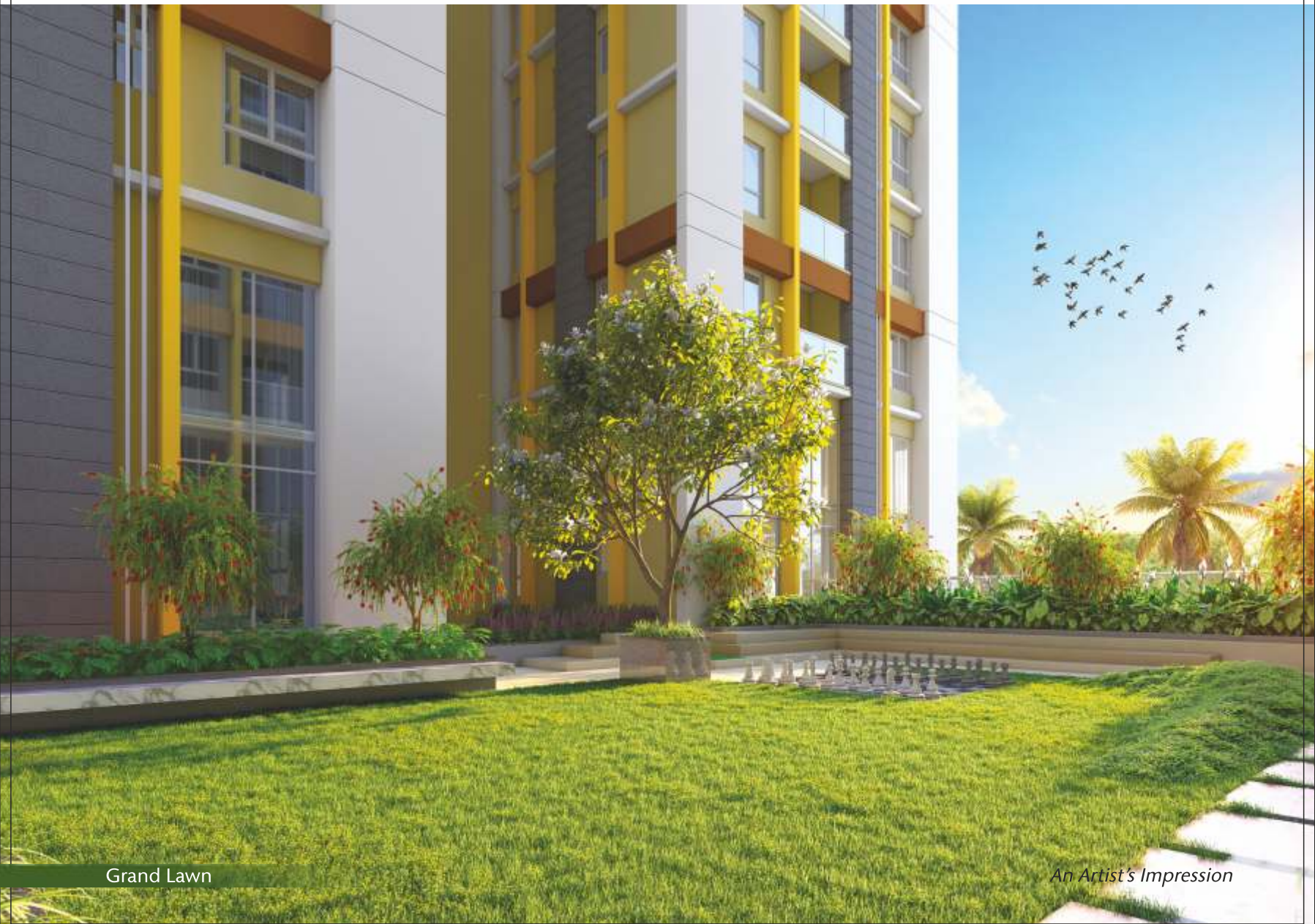
WEST

EAST

Natural Aqua Waves
An Artist's Impression



Front Landscape Garden



Grand Lawn

An Artist's Impression



Stepping Stone Pathway



An Artist's Impression

Swimming Pool



Community Hall



Gymnasium

An Artist's Impression

MASTER PLAN
(EAST)



LANDSCAPE CONCEPT PLAN GROUND LEVEL



LEGEND:

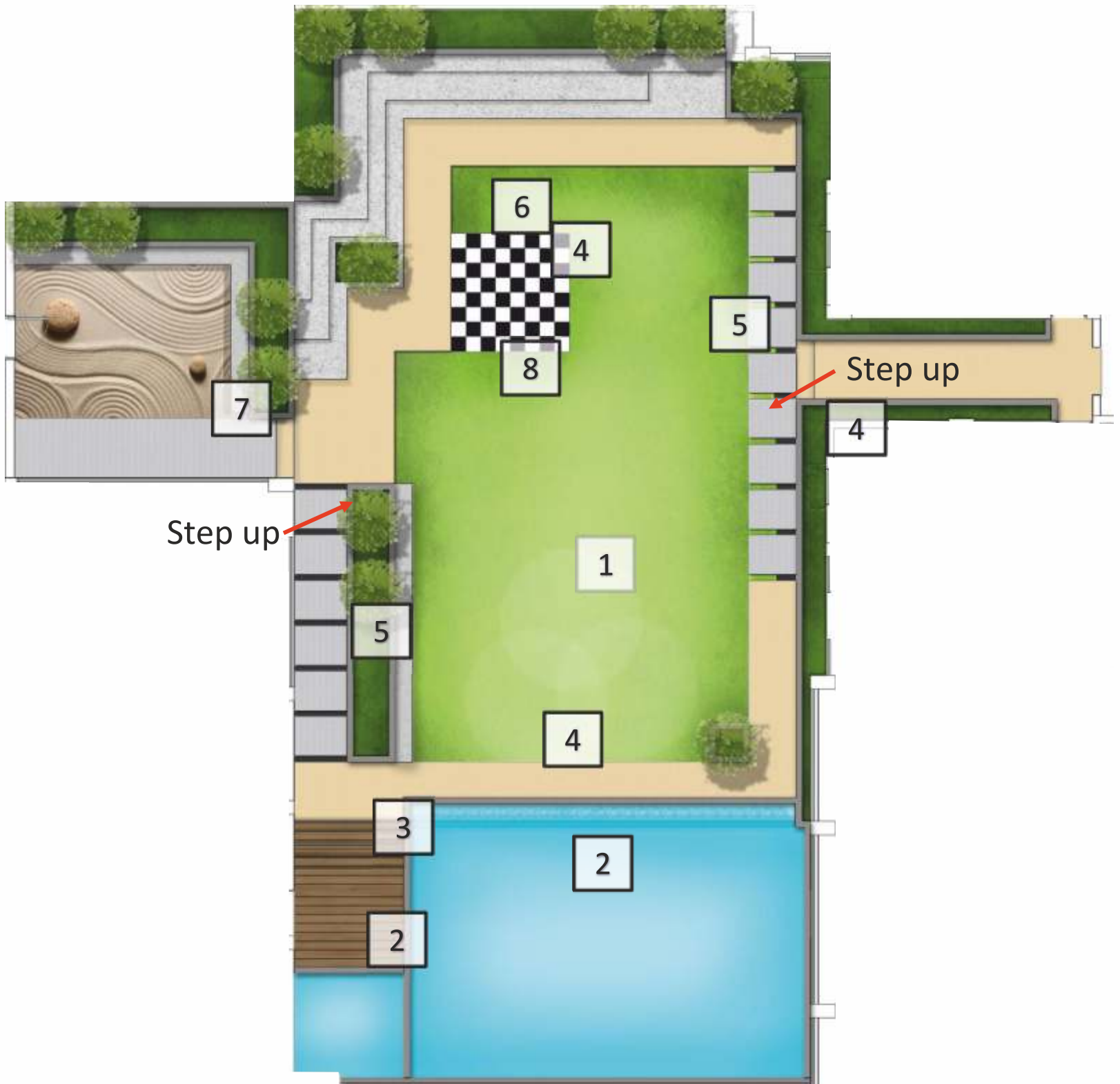
- 1. Entrance
- 2. Special paving at Drop Off Zone
- 3. Driveway
- 4. Jogging / Walking Track
- 5. Front Landscape Garden
- 6. Parking



LEGEND:

- 1. Jogging / Walking Track
- 2. Lawn
- 3. Kids' Play Area
- 4. Water Feature
- 5. Pavilion
- 6. Pathway
- 7. Parents' seating
- 8. Seniors' seating
-  Sculpture
-  Framed feature wall
-  Backdrop of sculpture

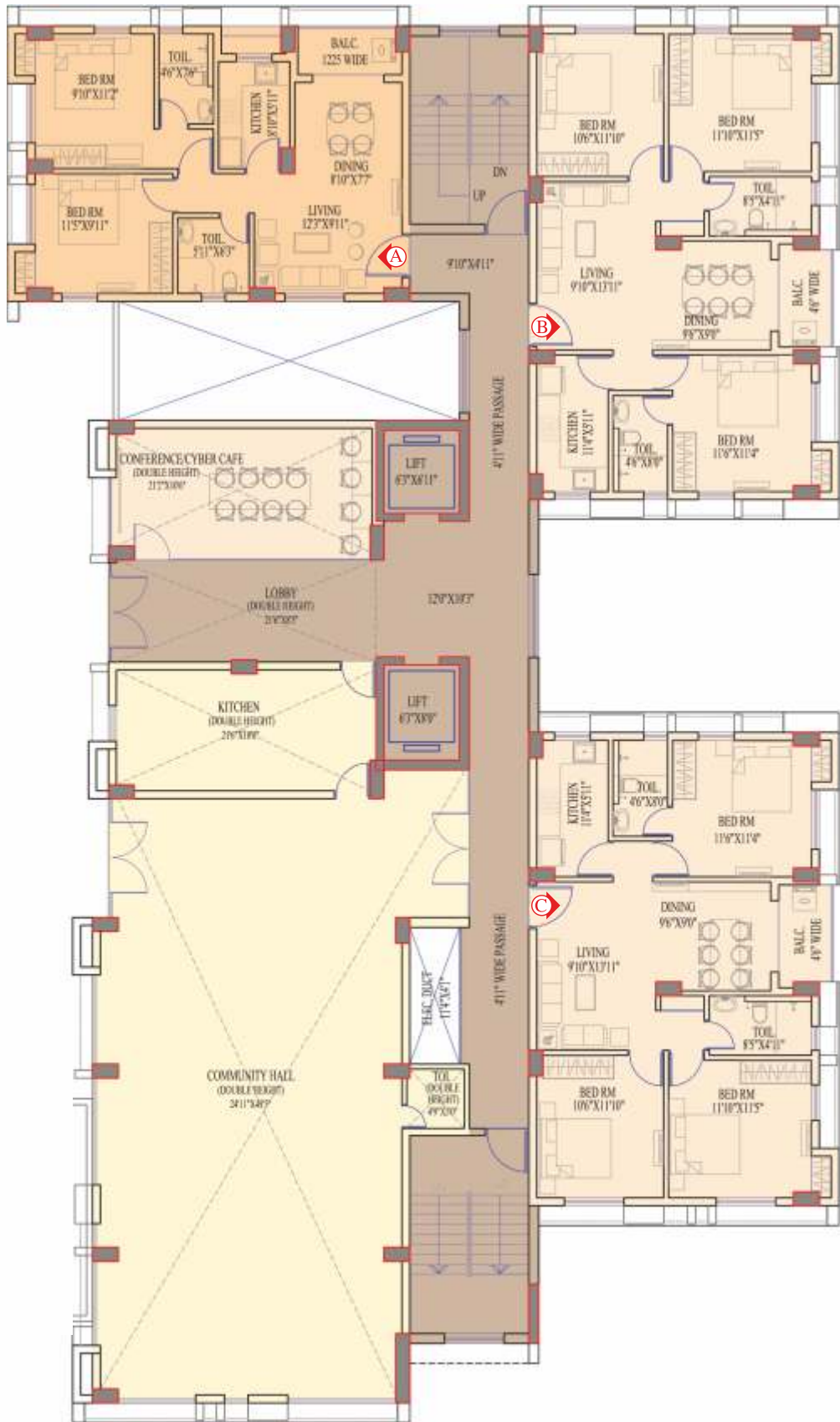
LANDSCAPE CONCEPT PLAN
PODIUM LEVEL



LEGEND

- | | |
|--|----------------------------|
| 1. Grand Lawn | 4. Pathway |
| 2. Swimming Pool / Kids Pool / Overflow Pool / Water feature | 5. Stepping Stones Pathway |
| 3. Pool Deck | 6. Amphitheater |
| | 7. Reflexology Court |
| | 8. Chess Corner |

FLOOR PLAN (1st & 2nd Floor)



BLOCK-1



Block 1

Flat	Type	Carpet Area	Balcony Area	Built up Area	Saleable Area
A	2 BHK	612	35	726	988
B	3 BHK	839	40	969	1318
C	3 BHK	839	40	969	1318

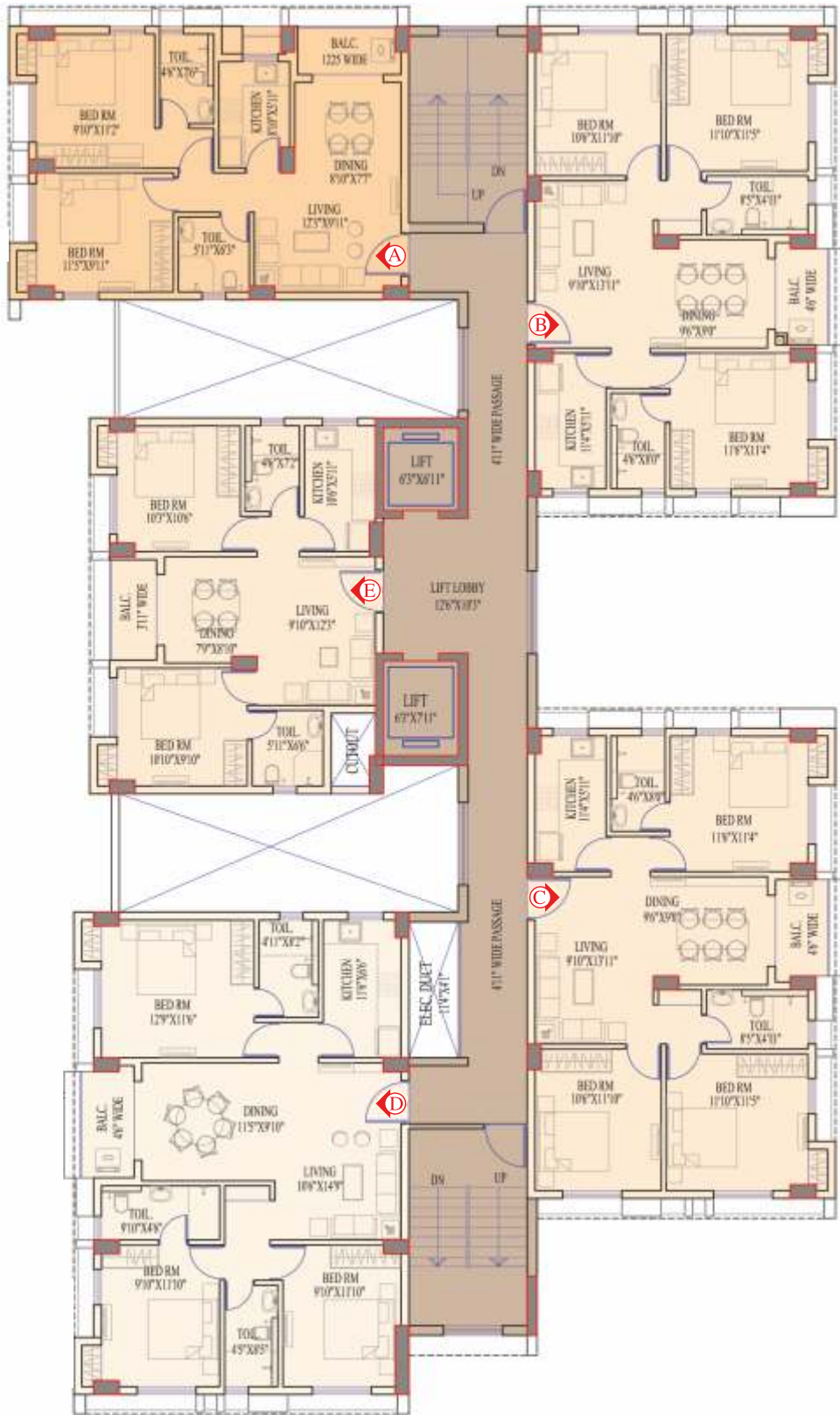
FLOOR PLAN
(1st & 2nd Floor)



Block 2

Flat	Type	Carpet Area	Balcony Area	Built up Area	Saleable Area
A	3 BHK	839	40	969	1318
D	3 BHK	945	44	1083	1473
E	3 BHK	839	40	969	1318
F	2 BHK	615	34	730	993
G	2 BHK	615	34	730	993

TYPICAL FLOOR PLAN (3rd to 14th Floor)



BLOCK-1

Block 1

Flat	Type	Carpet Area	Balcony Area	Built up Area	Saleable Area
A	2 BHK	612	35	726	988
B	3 BHK	839	40	969	1318
C	3 BHK	839	40	969	1318
D	3 BHK	995	44	1083	1473
E	2 BHK	589	33	708	962

TYPICAL FLOOR PLAN
 (3rd to 14th Floor)



Block 2

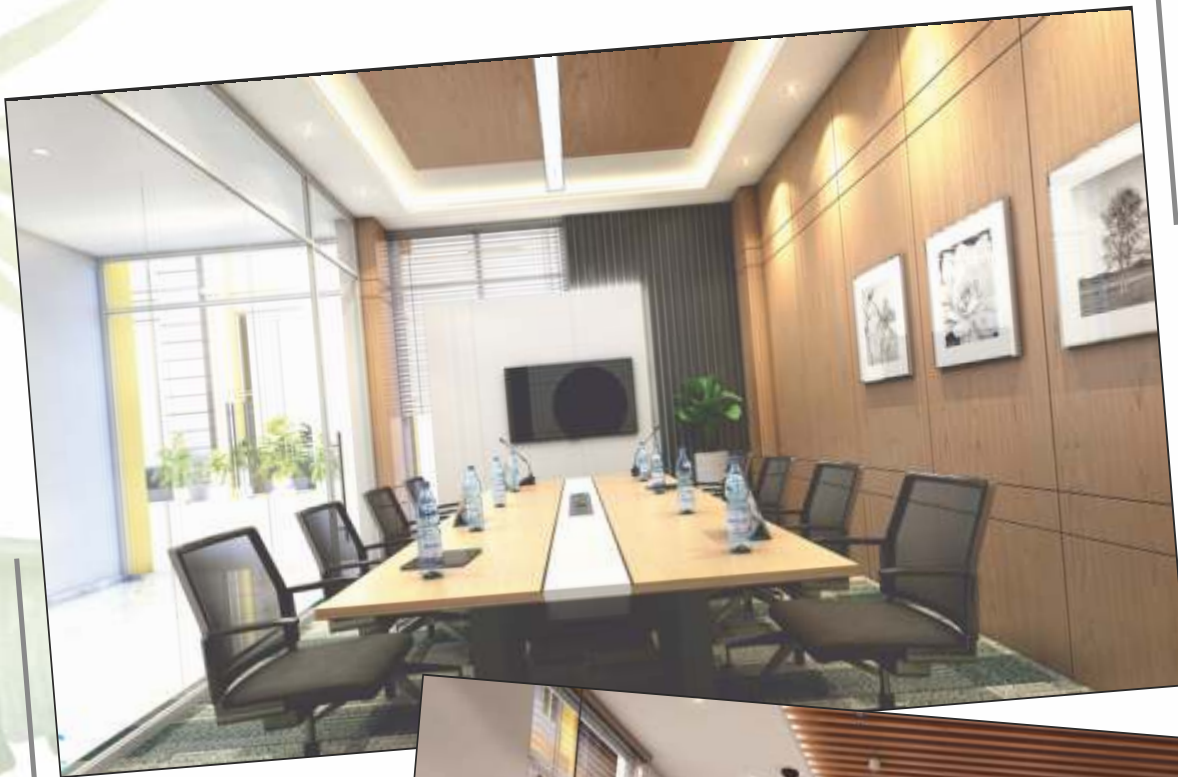
Flat	Type	Carpet Area	Balcony Area	Built up Area	Saleable Area
A	3 BHK	839	40	969	1318
B	3 BHK	839	40	969	1318
C	3 BHK	839	40	969	1318
D	3 BHK	945	44	1083	1473
E	3 BHK	839	40	969	1318
F	2 BHK	615	34	730	993
G	2 BHK	615	34	730	993

MORE
ABOUT
THE
PROJECT



PROJECT FEATURES

- Total size of land : 80 Kottahs
- Number of Towers 2 (G+14)
- Number of Flats : 2 BHK 54 | 3 BHK 106
- Total Developed Area : 1.94 lakhs Sq. ft.
- Decorated Main Entrance with Security
- Space Efficient Cross- Ventilated Apartments
- Landscaped Greenery
- Open Air Yoga Deck with Meditation Corner
- Adequate Car Parking space
- Children's Play Area
- Senior Citizens Corner
- Resident's Club with Community Hall
- Swimming Pool
- Gymnasium and Indoor Games
- CCTV and 24 x 7 Security Service
- Generator Back-up & 24 x 7 Water Supply
- Automatic Lifts in each block
- Fire Fighting Equipment with Fire Alarms



CONSTRUCTION SPECIFICATIONS

Structure:	R. C. C. framework
External Finish:	Latest durable paint/ texture weatherproof outer finish
Staircase:	Spacious Marble staircase with matching Rails
Lobby:	Ground floor lobby with Granite/marble/vitrified tiles. Floor Lobby with good quality tiles
Balcony:	Decorative MS Railings
Flooring:	Vitrified tiles in living room, dining room, bedrooms, & Balcony. Anti-skid tiles in Kitchen and Toilets
Kitchen:	Granite slab counter with stainless steel sink. Ceramic tiles up to 2 ft height above platform
Toilets:	Tiles up to door height; hot & cold water point; European style WC and Basins of reputed make; elegant C P fittings & fixtures
Windows:	Anodized Aluminum Sliding windows
Doors:	Standard flush doors
Lifts:	2 nos. automatic lifts
Fire Fighting:	All provisions for modern fire fighting system
CC TV:	In Main Gate common passage & Ground Floor lobby
Interior Finish:	Smooth putty finish on all internal walls
Electricals :	Concealed wiring with latest modular switches AC point & Electric point in all bedrooms. Power points & exhaust fan points in kitchen & toilets
Water Supply:	24 hrs filtered water supply



The distinguished leaders of the

Domain

THE LEGACY OF EXCELLENCE.

Transforming a place into a home and homes into communities is the mission of Natural Group. Creating Better Communities is its reason of existence and happiness of these communities is its motivation. The Group shoulders this responsibility of raising a complete world that brings fulfillment to life. Be it through the flagship business of real estate or its foray into education, healthcare, hospitality, retail and mixed use; the Group continues to create a better experience in every aspect of life – a commitment Natural Group pledges to live up to at every threshold and crossroad of its journey to the summit of excellence.

RESIDENTIAL ✦ COMMERCIAL ✦ MIXED USE

Natural Group Ongoing Projects



UTOPIA
(Madurdaha, Kolkata)



NATURAL CITY LAKETOWN
(Dakshindari, Kolkata)



NATURAL QUEST
(Survey Park, Kolkata)



NATURAL CITY
(Birati)



NATURAL HEIGHTS
Kolkata



NATURAL GREENS
(Kolkata)



NATURAL PARK VIEW
(Kolkata)



NATURAL VIEW
(Kolkata)



NATURAL ENCLAVE
(Kolkata)

Natural Group Past Projects



NATURAL HEIGHTS
(Durgapur)



NATURAL CITY
(Shyamnagar Rd., Kolkata)



NATURAL CITY
(Bardhaman)



NATURAL SARVAPRIYA
(Kolkata)



HALDIRAM ENCLAVE
(Kolkata)

NATURAL
aqua
Waves
East
Take it easy

Site address:
Beside Aquatica, Thakdari Road,
Kochpukur, Dist : 24 Pgs.(South)
New Town, Kolkata.

Developed by



Corporate Office:

RABINDRA NATH DEVELOPERS LLP
9A, Lord Sinha Road, Kolkata - 700 071
T: +91 76690 45860
M: 98305 11111, 90387 33333
marketingkolkata@naturalgroupkolkata.co.in | naturalgroup.co.in

MARKETED BY



Somani Realtors Pvt. Ltd
40, Ashutosh Mukherjee Rd, Kolkata - 700020
www.somanirealtors.com | sales@somanirealtors.com
98300 28131 / 98300 76815
HIRA/A/KOL/2018/000026

Project Architect :
Raj Agarwal & Associates
8B, Royd Street, Kolkata - 700 016